

OREGON PUBLIC LAND CORNER REPORT / RESTORATION REPORT
Tillamook County Surveyor's Office

SECTION: 29	TOWNSHIP: 3 North	RANGE: 10 West
COUNTY: Tillamook		DATE: 1/2023
CORNER DESIGNATION: The Northeast Sixteenth corner of Section 29, Township 3 North, Range 10 West Willamette Meridian		<p style="text-align: center;">(Please check one)</p> <input checked="" type="checkbox"/> Condition Report Only <input type="checkbox"/> Restoration <input type="checkbox"/> Rewitness <input type="checkbox"/> Unrecorded <input type="checkbox"/> Reset at surface <input type="checkbox"/> Referenced Out
This monument is also the Initial Point of Woerndle's Addition to Manzanita Beach		

Previous Rewitnesses, Restorations and Surveys, etc...
 C-5 (1911), C-62 (1912), C-127 (1946), REWITNESS BK. 5 PG. 89 (1966), REWITNESS CARD #158 (1970), F-20-12 (1986), F-29-18 (1989), B-1434 (1990), P-9 (1990), B-1483 (1991), REWITNESS BK. 7 PG. 101 (1991), C-506 (2002), C-514 (2003), C-517 (2004), C-519 (2004), C-524 (2005), C-532 (2005), P-814 (2006), C-575 (2009), C-584 (2009), P-1022 (2012), P-1176 (2022)

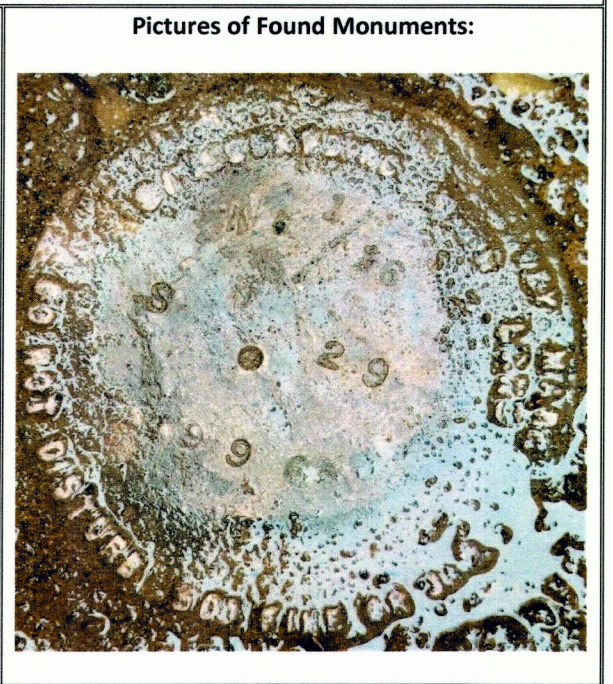
History, condition, and sources:
 In 1911 (C-5) G. J. Poysky set a 2" iron pipe for the NE 16th corner of section 29. In 1946 (C-127) the monument was used for the Initial Point of Woerndle's Addition to Manzanita Beach being a 2" iron pipe. In 1970 (Rewitness card # 158) Tillamook County Surveyor's office Set a 2" iron pipe with a 3" Tillamook County Brass cap in concrete and tile stamped "NE 1/16 S 29 RS 793 1970" in place of the found 2" iron pipe and added 1 new accessories. In 1991 (Rewitness bk. 7 pg. 101) the Tillamook County Surveyor's office referenced out the monument prior to road construction and reset it in concrete using said references and added 3 new accessories. In 1996 Tillamook County Surveyors office added a monument box and a new cap stamped "NE 1/16 S 29 1996" but no record of this new cap. In 2022 Tillamook County Surveyor's office visited the monument and found the new cap with no record and the accessories listed below along with adding 1 new accessory.

Not Found: (Rewitness bk. 7 pg. 101) 15" hemlock N 81° 21' E 28.55' with healed face and yellow metal location tag
 Found: (Rewitness bk. 7 pg. 101) 96" hat section post with yellow metal location tag N 23° W 13.9' **moved now** N 53° W 26.6'
 Not Found: (Rewitness bk. 7 pg. 101) Punch hole in chiseled triangle in east rim of sewer manhole rim N 88° 32' 18" W 69.96'
 Not Found: (Rewitness bk. 7 pg. 101) 80 D spike N 11° 21' E 15.29'
 Found: (Rewitness bk. 7 pg. 101) power pole #297612 S 40° 02' E 27.03' **now** new pole with the old number on it 28.9'

New accessories set:
 Found: fire hydrant N 40° W 20.3' to the center punch of the top nut of hydrant

The Monument was tied directly using G.P.S. established control. The coordinates have been converted and are provided here in WGS 84, Latitude and Longitude.

Latitude: 45° 43' 18.54"
 Longitude: 123° 55' 51.57"



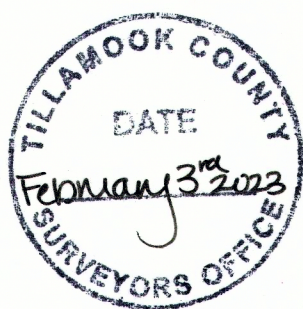
Location: In the as built centerline at the intersection of Division Street and North Avenue in Manzanita

Tillamook County Surveyor's office: 1510 3rd Street Suite C, Tillamook, OR. 97141

Party Chief: Travis Porter, Tillamook County Survey Supervisor

Witnesses: Michael Rice PLS, Tillamook County Surveyor
 Kael Poklikuha, Tillamook County Survey Tech.

Notes: Digital images taken of monument and accessories.



SURVEYOR'S SEAL

REGISTERED
 PROFESSIONAL
 LAND SURVEYOR

Michael Rice

OREGON
 DECEMBER 11, 2012
 MICHAEL R. RICE
 86926

RENEWAL 12-31-2024